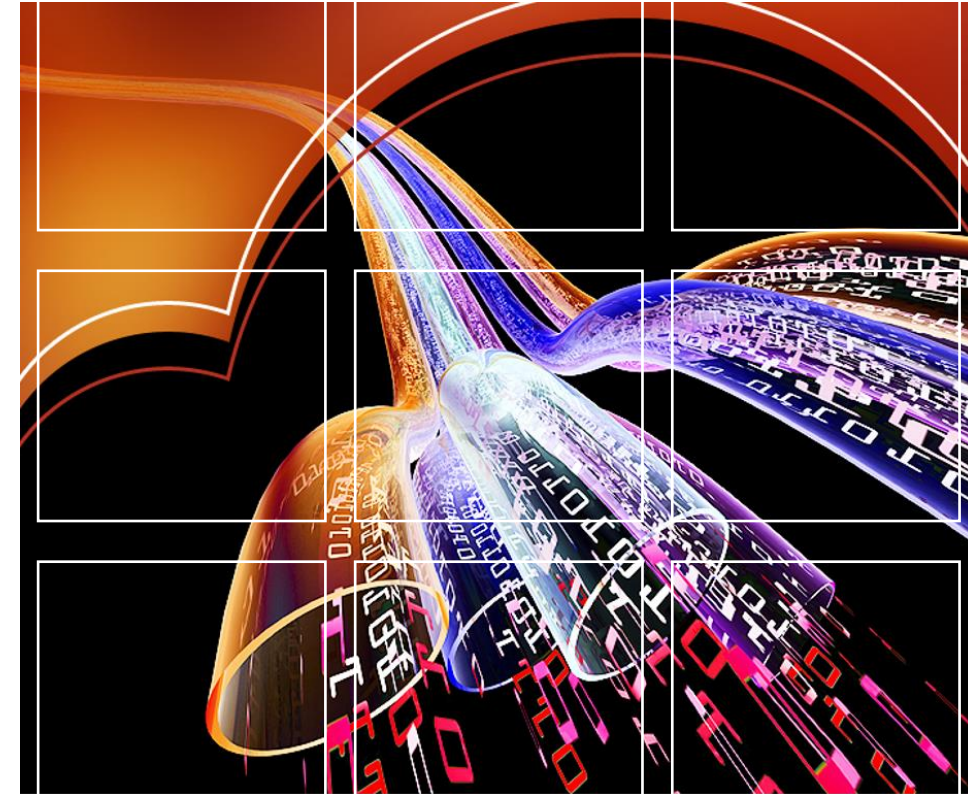
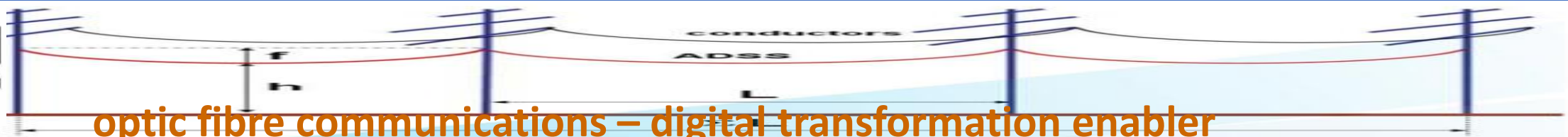


# Digital Transformation Enabler



Chester Kabinda-Mbewe



# Bringing the World to Malawi Through Digital Transformation

- The Business
- The Topology
- The Technology
- Capabilities
- The Data Centre
- Contact us

optic fibre communications – digital transformation enabler



# The Business.....

- The Optic Fibre Communications (OFC) is a semi-autonomous business within ESCOM.
- Overhead Optic Fibre network strung on electricity infrastructure.
- The most efficient, Available, Reliable, Secure and Affordable.
- Committed to service delivery with uptime (99.9%) aimed at business continuity.

- **International Gateway:** Zobue, Dedza Border, Songwe, Chipata, Milanje, Lundazi, Chiponde
- **Backbone:** The OFC network is present in all the district including Likoma Island
- **Metro Network:** Available in 10 Districts; Blantyre, Thyolo, Zomba, Mangochi, Salima, Dedza, Lilongwe, Kasungu, Mzuzu and Karonga
- **Access Network:** Available in Blantyre, Zomba, and Mzuzu



# Technology Deployed



SDH

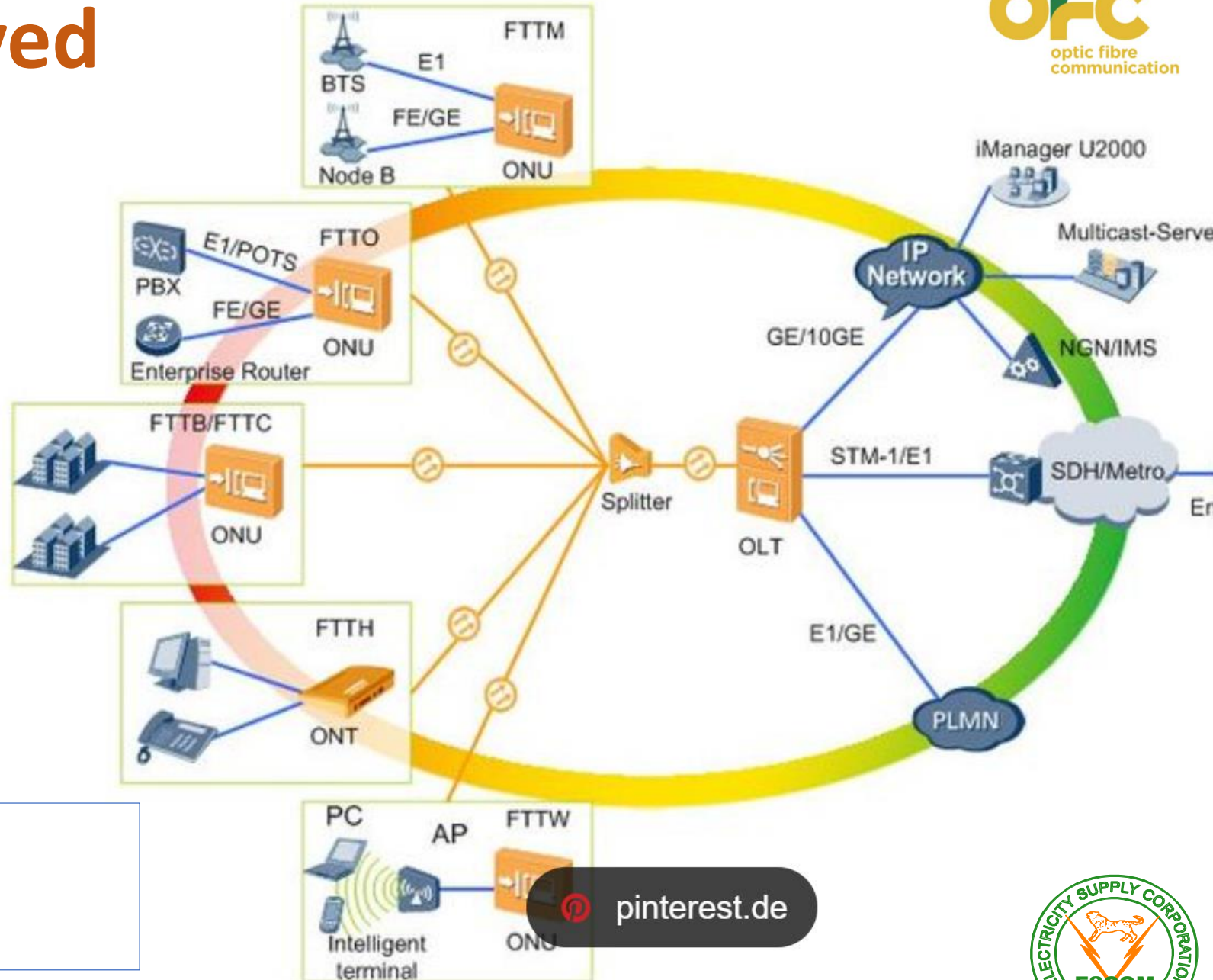


DWDM



IP

GPON



# The OFC Network....

## Government and Public Services

- Supports e-government initiatives, online government services, public safety communications, and emergency response systems, enhancing government efficiency and citizen engagement.

## Telecommunication Services

- Delivers a wide range of advanced communication services, including voice, data, and video services such as IPTV (Internet Protocol Television), VoIP (Voice over Internet Protocol), and high-definition video streaming.

# The OFC Network....

## Business Solutions

- Delivers broadband connections directly to office buildings, enabling businesses to access reliable internet and/or connectivity.

## Education and Healthcare

- Supports e-learning, telehealth, electronic medical records, and other digital services that improve access to education and healthcare services.

# The OFC Network...

## Smart City Ready

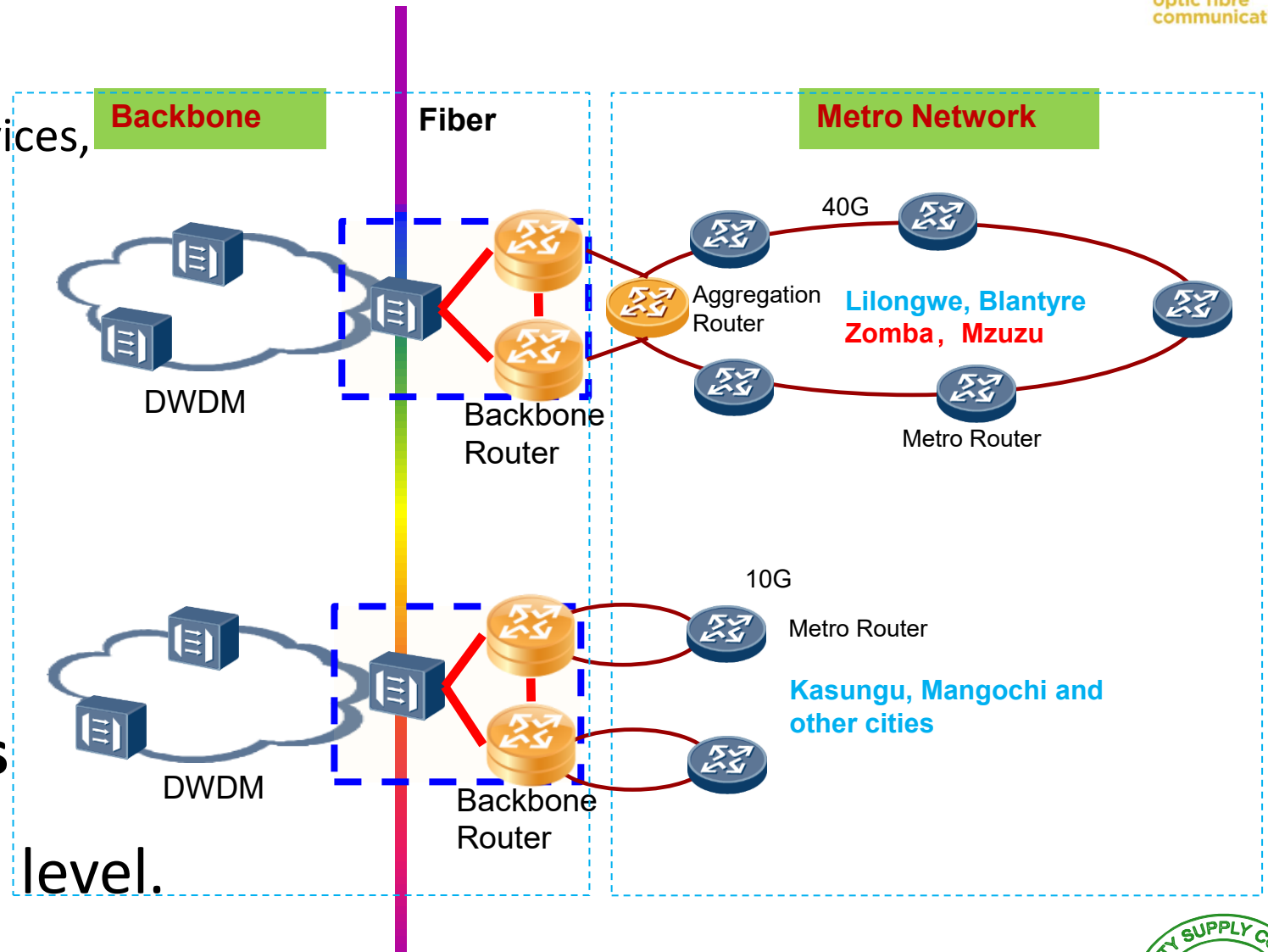
- IoT (Internet of Things) devices,
- surveillance cameras,
- energy efficiency and
- urban planning.

## Entertainment and Media

- Streaming services,
- Gaming platforms,
- Podcasts

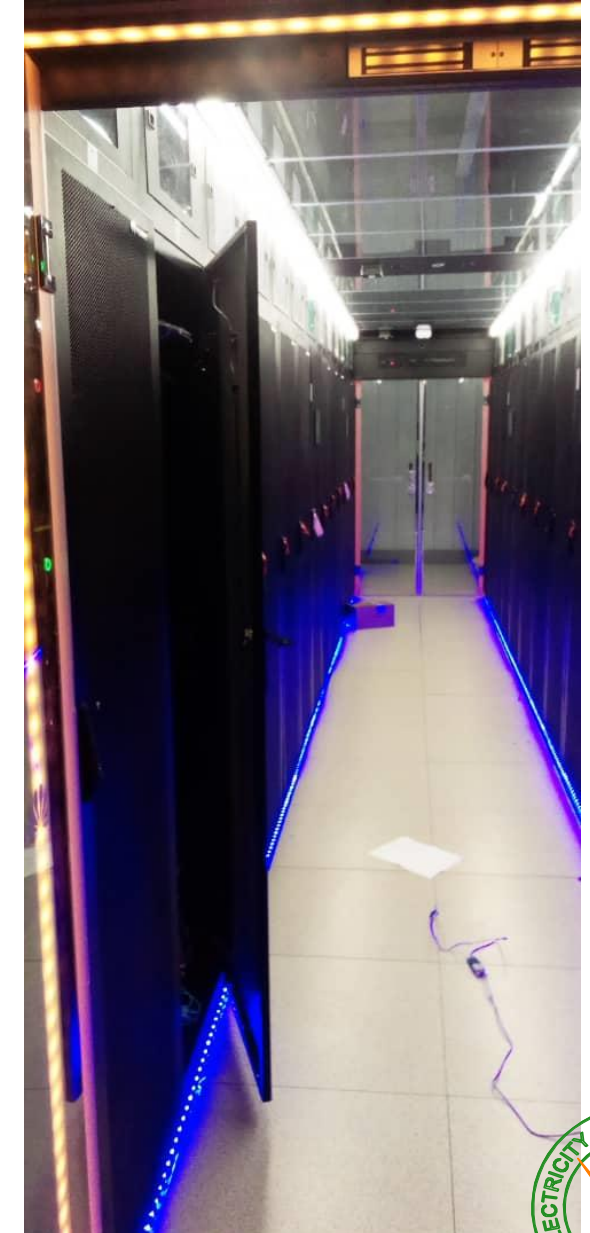
## Residential Internet Access

- Tripple play at household level.



# The National Data Centre

- Data Centre
  - Tier 3 DataCentre
  - Cloud computing
  - 2 Modules of
    - 21 Racks – 42U each
  - Memory 20.209TB
  - CPU – 7300 core
  - Storage 300TB
  - 99.98% uptime



# The National Data Centre...

- Space Co-allocation
- Rack Space
- Data storage
- Virtual Machine
- Cloud computing



# The collaboration...

## Diplomatic Data Corridors

- Ministry Information & Digitalization
- MACRA

## Yathu-Yathu Data

- Rural ISP
- Unserved,
- Public Institution

# Contact us

**Mercy Jumbe**

**Mobile: 265 992 00 16 02**

**Email: [mjumbe@escom.mw](mailto:mjumbe@escom.mw)**

**Mervin Chipeta**

**Mobile: 265 884 82 46 38**

**Email: [mchipeta@escom.mw](mailto:mchipeta@escom.mw)**

**Nkhwachi Theu**

**Mobile: 265 999 56 72 92**

**Email: [ntheu@escom.mw](mailto:ntheu@escom.mw)**

# Thank You

Chester Kabinda-Mbewe  
[ckabinda@escom.mw](mailto:ckabinda@escom.mw)  
+265 888 863 253

